

Technology and Environmental protection
GENERAL CATALOGUE



- CARRIER
- FORKLIFT
- CRUSHER
- FORWARDER
- SCREEN
- SHOVEL LOADER



MOROOKA

CARRIER

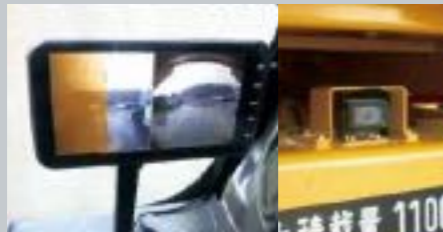
RUBBER CRAWLER

WE TAKE PRIDE IN BEING
A PIONEER OF RUBBER TRACKS.

Simple operability



Rotation and dump control Combination lever (user friendly operability)



Highly Visible side and back camera

Time of turning around is reduced by 360° rotation function and work efficiency will be highly improved with it. Pilot lamp, back and side camera are installed as standard equipment for safety.

Drop side deck



End dump



Versatile application to meet worldwide customer needs

Morooka products are used in a wide range of applications and are particularly suited to environmentally sensitive areas. They will accommodate a variety of attachments such as water tanks, Digger derricks, drill rigs, cement mixers, welders, lubrication rigs, fire fighting equipment, specialty dump bodies, scissor lifts, seismic testing equipment.



	MST-200VDR	MST-300VD	MST-300VDR	MST-600VD	MST-700VD	MST-800VD	MST-1500VD	MST-1500VDR	MST-2200VD	MST-2200VDR	MST-3000VD				
Max. Payload	2,000 kg	2,500 kg	2,500 kg	3,800 kg	4,300 kg	4,800	7,000	7,000	7,000 kg	7,000 kg	15,000 kg				
Overall Length	2,850 mm	3,150 mm	3,150 mm	3,780 mm	4,520 mm	4,430	5,360	5,520	5,750 mm	5,790 mm	6,200 mm				
Overall Width	1,500 mm	1,745 mm	1,745 mm	2,100 mm	2,200 mm	2,425	2,635	2,650	2,650 mm	2,600 mm	3,000 mm				
Overall Height	2,340 mm	2,330 mm	2,330 mm	2,330 mm	2,580 mm	2,590	2,780	2,900	2,910 mm	3,178 mm	3,100 mm				
Engine Model	KUBOTA V1505 Tier 4 final Stage 4	KUBOTA V2203 Tier 4 interim Stage 3A	KUBOTA V2203 Tier 4 interim Stage 3A	KUBOTA V3307 Tier 4 interim Stage 3A	KUBOTA V3800 Tier 4 interim Stage 3B	Mitsubishi 4D34 Tier 2 Stage 2	CAT C4.4 Tier 4 interim Stage 3B	Mitsubishi 6D16 Tier 2 Stage 2	CAT C6.6 Tier 3 Stage 3A	Cummins QSB6.7 Tier 4 final Stage 4	Cummins QSB6.7 Tier 4 final Stage 4	CAT C7 Tier 3 Stage 3A	Cummins QSB6.7 Tier 4 final Stage 4	CAT C7.1 Tier 4 final Stage 4	CAT C9 Tier 3 Stage 3A

FORWARDER

RUBBER CRAWLER

**STRONGEST PARTNER
ON YOUR FORESTRY JOBSITE.**

A lot of options and 5 models lineup

A lot of options (grapple, crane and winches etc.) are prepared for customer's request.
5 models are prepared for responding to the various operating conditions.



Purpose built forest machine in mind of balance and safety

By moving the engine forward greatly, at the time of loading, it keeps the balance at suitable level.
Undercover, pump & motor cover are reinforced to protect machine from shock.



MST-300VDL



MST-600VDL



MST-700VDL (Grapple)



MST-800VDL



MST-1500VDL

Max. Payload	2,800 kg	3,300 kg	3,800 kg	5,000 kg	7,000 kg
Overall Length	4,205 mm	4,690 mm	5,650 mm	5,070 mm	6,000 mm
Overall Width	1,740 mm	2,100 mm	2,245 mm	2,300 mm	2,500 mm
Overall Height	2,330 mm	2,270 mm	3,110 mm	2,380 mm	2,860 mm
Engine Model	KUBOTA V2203-M/ Tier 4 Interim/ Stage 3A	KUBOTA V3307-DI-T/ Tier 4 Interim/ Stage 3A	KUBOTA V3800-CR-TE4B/ Tier 4 Interim/ Stage 3B	CAT C4.4 ACERT/ Tier 4 Interim/ Stage 3B	Cummins QSB6.7/ Tier 4 Interim/ Stage 3B

FORKLIFT

RUBBER CRAWLER

OUR FORKLIFTS WORK WHERE
WHEELED-TYPE FORKLIFTS CANNOT ACCESS.



Highly visible
LED lamp installed



Easy inspection
and maintainability



Side shift available



Suretech House, 48 Jawahar Industrial Area, Kamothe, Panvel, Navi Mumbai 410209
Toll free: 1800 120 7873 Customer Relations: +91 77388 94923 Sales: +91 70213 26765
Email: sales@suretech.co.in www.suretechinfra.com YouTube: www.youtube.com/SURETECH



MFD-20

Max. Payload	2,000 kg
Overall Length	4,030 mm
Overall Width	1,590 mm
Overall Height	2,250 mm
Engine Model	KUBOTA V2403-CR-TI-YDN Tier 4 Final/ Stage 3B